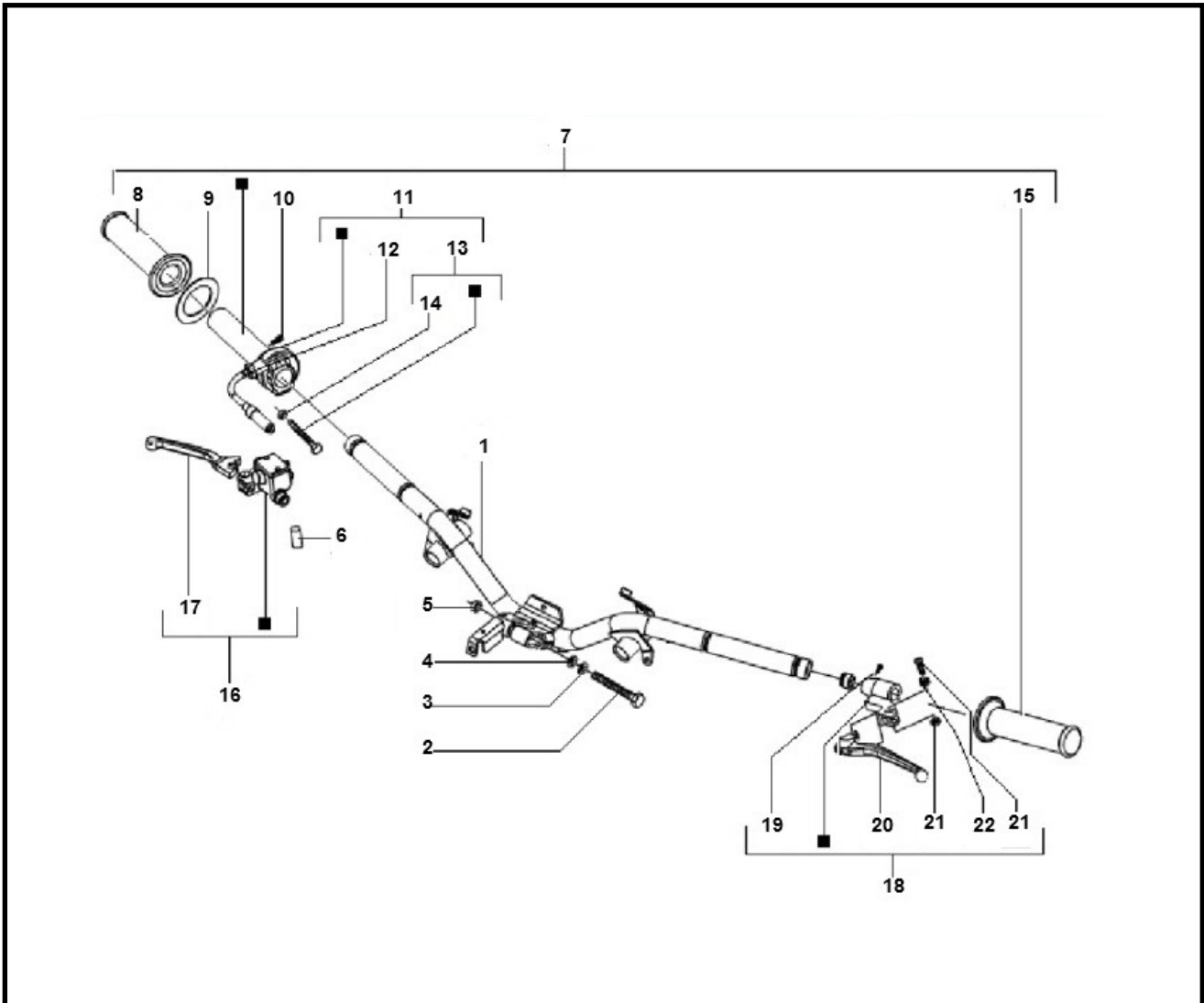


Marke Piaggio
 Modell LX
 Ausführung PIAGGIO LX 4V 45KM
 g

MOKiX

Zeichnung 27.STUURDELEN (16905)



| Verzeichnis | Artikelnummer | Beschreibung |
|-------------|---------------|--|
| 01 | 21458 | LENKER PIAGGIO VESPA LX ORG |
| 02 | 10378 | INBUS-SCHRAUBE M10x65 ZINK 10 stuck |
| 07 | CM060982 | PIAGGIO GASGRIFF |
| 08 | 89222 | GRIFFGUMMI RETRO DUNKEL BRAUN LEDER |
| 11 | 88243 | GASZUG PIAGGIO LX 4T SUPERTEC |
| 15 | 89222 | GRIFFGUMMI RETRO DUNKEL BRAUN LEDER |
| 16 | CM074904 | PIAGGIO/VESPA LX BREMPUMPE |
| 17 | 71001 | HEBEL RECHTS PIAGGIO ZIP/FLY/LX/LXV 4T ALUMINIUM |
| 17 | 71002 | HEBEL L/R PIAGGIO ZIP/NRG-RST/EXTR/STALKER SCHWARZ |
| 18 | CM063804 | PIAGGIO LX M05<->M08 LH BREMSHEBEL |
| 20 | 70821 | HEBEL LINKS PIAGGIO ZIP/FLY/LX/LXV 4T ALUMINIUM |
| 20 | 70822 | HEBEL LINKS PIAGGIO SCOOTER NT LX/LXV 4T SCHWARZ |