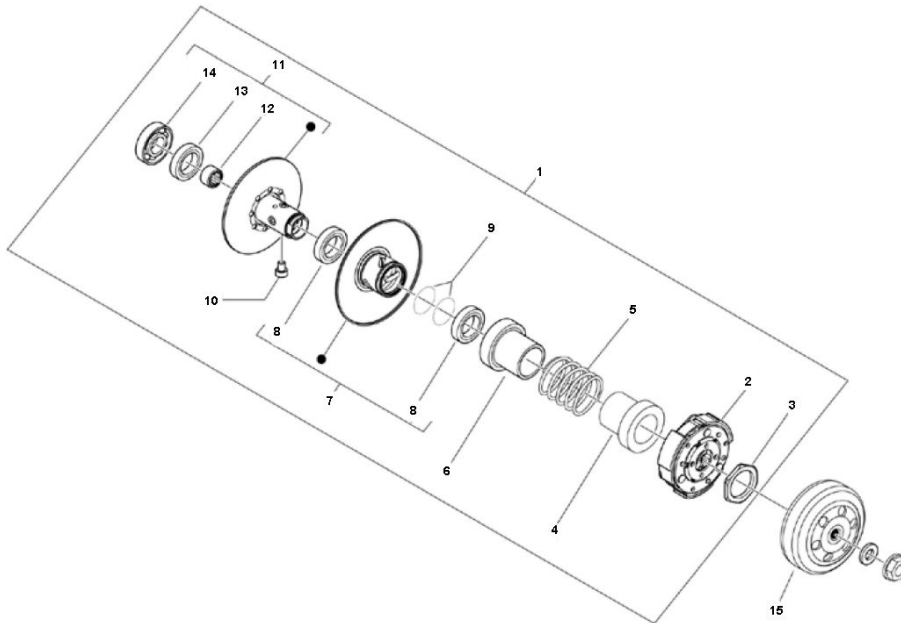


Marke MOTOR  
 Modell PIAGGIO  
 Ausführung 4T 4V 45KM/H PRIMAVERA  
 g  
 Zeichnung 09.KOPPELING (20082)



| Verzeichnis | Artikelnummer | Beschreibung                                       |
|-------------|---------------|--|
| 01          | CM100107      | KUPPLUNG PIAGGIO 4T LX 50/FLY C26-C30-C28 ORG      |
| 02          | 25930         | KUPPLUNGSBELÄGE MINARELLI/PIAGGIO 107mm STD        |
| 03          | 107013        | MUTTER FUR KUPPLUNG MINARELLI/PEUGEOT/PIAGGIO 28x1 |
| 04          | 487935        | PIAGGIO ABDECKUNG KUPPLUNG                         |
| 05          | 478028        | PIAGGIO C19-C25 KUPPLUNGSDRUCKFEDER                |
| 06          | 483443        | PIAGGIO BUCHSE Q=60/43-32 C02                      |
| 07          | 89073         | WANDLER AUSSEN SCHEIBE PIAGGIO SCOOTER OT          |
| 08          | 10131         | WELLENDICHTRING 34 x 39 x 3 DG ARUSO               |
| 09          | 289840        | PIAGGIO O-RING KUPPLUNG 40x2 AR C02                |
| 10          | 482766        | PIAGGIO GLEITSTIFT KUPPLUNG AR C13                 |
| 11          | 4795526       | PIAGGIO RIEMENSCHLEIBE AUSSEN                      |
| 12          | 289952        | PIAGGIO KUPPLUNG NADELLAGER 310-8079               |
| 13          | 006624        | PIAGGIO CIRCLIP 24mm                               |
| 14          | 82655R        | PIAGGIO LAGER                                      |
| 15          | 289933        | PIAGGIO NSP-C02-C15 KUPPLUNGSGLOCKE                |